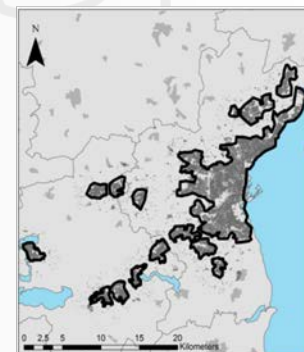
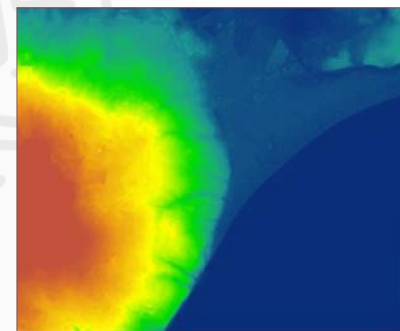


The research frontier

Spatial Dimensions of Stated Preferences

Toke Emil Panduro



The spatial relationship?

- The spatial relationship is apparently governed by a distance decay function $\frac{1}{d^\alpha} \dots$
- Distance d should be measured in road network distance...



The spatial relationship?

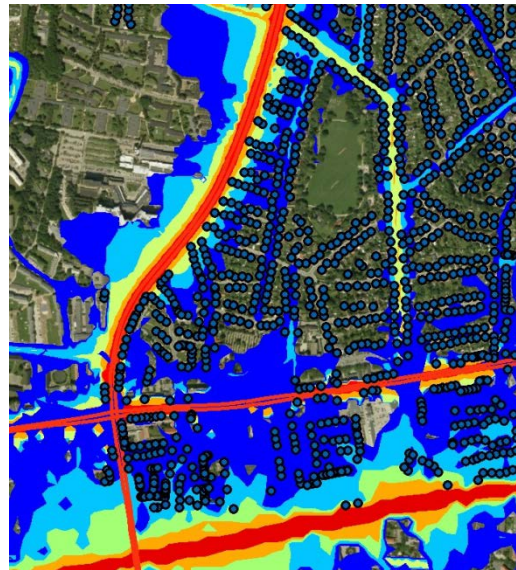
- The spatial relationship is apparently governed by a distance decay function $\frac{1}{d^\alpha} \dots$
- Distance d should be measured in road network distance...
- There is an infinite number of functions that can describe a spatial relationship,
 - why restrict the relationship to distance decay?
- The true distance is the perceived distance.
 - Why should the true distance conform to road network distance?

GIS add to additional complexity

Beeline distance



Overlay analysis



Concentration

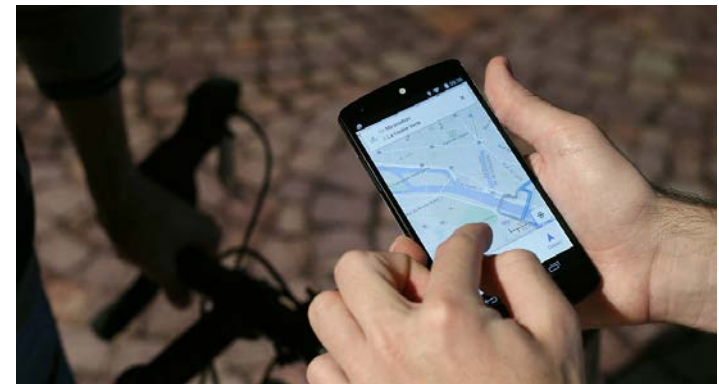


Spatial econometrics

- To approaches
 - Controlling for unexplained spatial relationships
 - The main issue is the spatial relationship
 - Fixed effect on administrative borders, spatial weight matrixs, non-parametric approaches
 - If the main issue is the spatial relationship
 - Spatial scale
 - Spatial extent
 - Need for much larger datasets to identify a spatial patterns

Lets follow people around

- Still a random utility setup but revealed...
- Lets take the Trains and McFaddens criticism serious and see if we can find similar results using a slightly different setup



Toke Emil Panduro

Msc, PhD, Assistant Professor

Spatial Environmental Economics

Department of Food and Resource Economics

Faculty of Sciences, University of Copenhagen

Rolighedsvej 23, DK-1958 Frederiksberg C

Mobil 23962908

Mail tepp@ifro.ku.dk

<http://sites.google.com/site/tokeemilpanduro/>